

Understanding the Registry Patient and Caregiver Initial Login Instructions

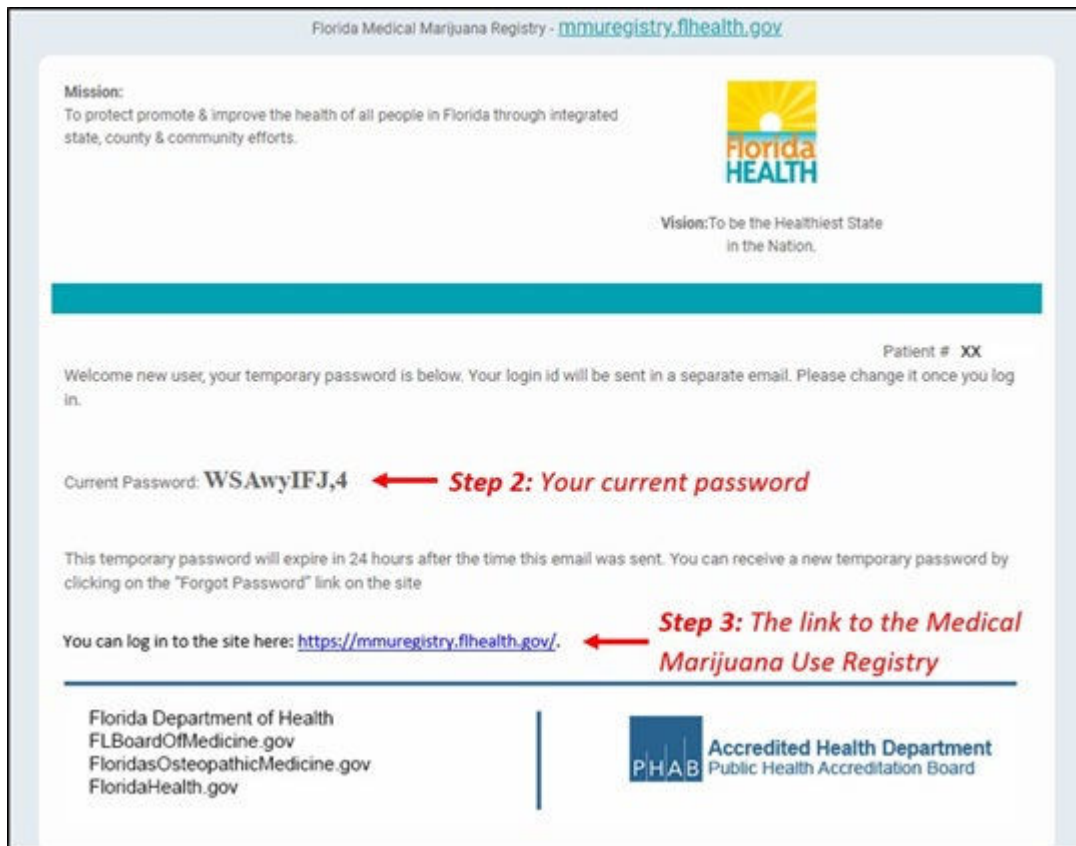
Step 1: Open the personal email account that you gave to your doctor when they added you to the Medical Marijuana Use Registry.

Step 2: Locate and open the emails with “Medical Marijuana Use Registry New User Account” as the subject line. One email contains your username (your username is the email you supplied to your doctor). The second email contains your temporary password. Remember your temporary password, you will use it to log in.

Passwords in the Registry are case sensitive. Temporary passwords are in the following order: 3 capital letters, 2 lower case letters, 3 capital letters, a symbol and a number. For example, ABCdeHIJ#0 (please note that the lower-case L and a capital i look the same).

*If you do not find the “Office of Medical Marijuana Use New User Account” email, [click here](#) for additional information.

Step 3: Click on the Registry link provided in the email. This link takes you to the Registry’s home page.



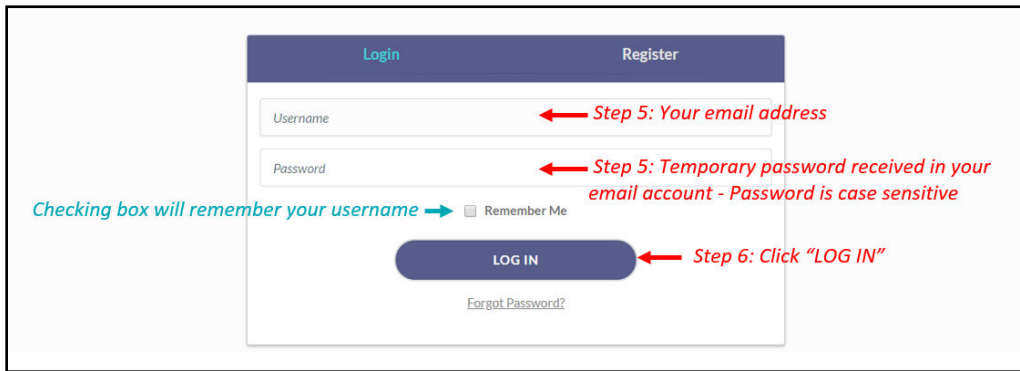
Step 4: Click “Log In.”



Step 5: Type your username and temporary password in the correct boxes on the screen.

The temporary password is case sensitive, it is only valid for one successful login attempt and must be used within 24 hours of it being sent to you.

Step 6: Click “Log In.”



After you log in, you will be instructed to change your password.

Step 7: Type your temporary password into the “Current Password” box (this is the temporary password that was sent to your email in Step 2).

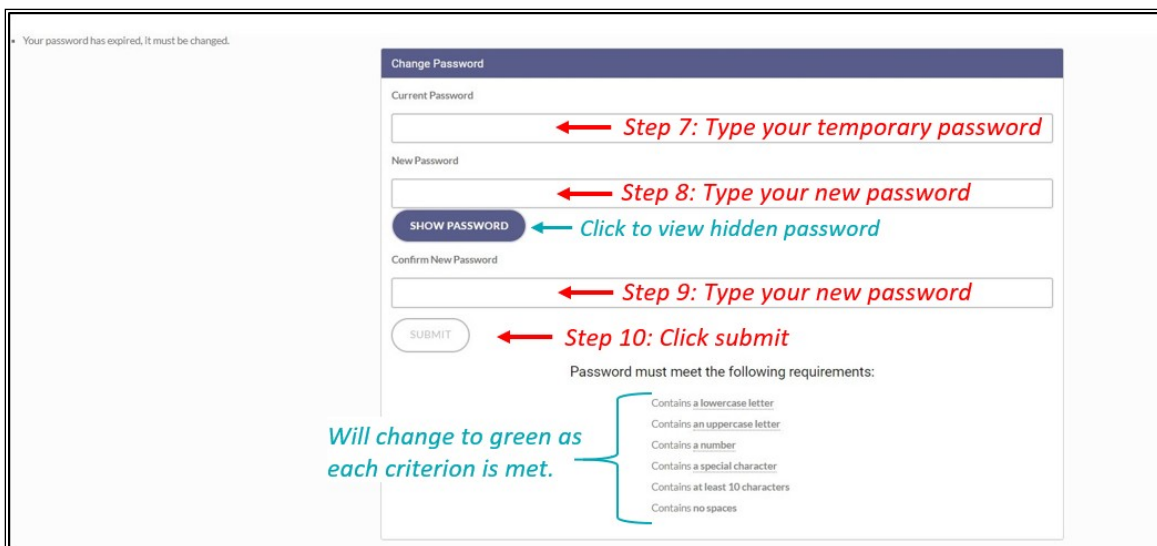
Step 8: Create your new password. You need to add a password to your Registry account that is unique to you. It must be 10 characters long and include each of the following:

- Lowercase letters (a-z)
- Uppercase letters (A-Z)
- Numbers (0-9)
- Special characters (!"#\$%&'()*+,-./:;<=>?@[\\]^_`{|}~)

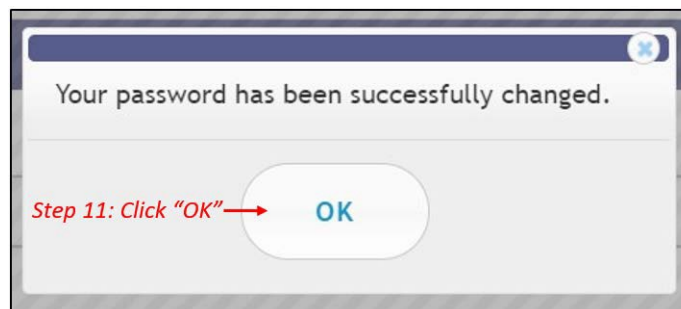
**You can click “Show Password” for help.*

Step 9: Confirm your new password.

Step 10: Click “Submit.”



Step 11: A confirmation message box will appear. Click “Ok.”



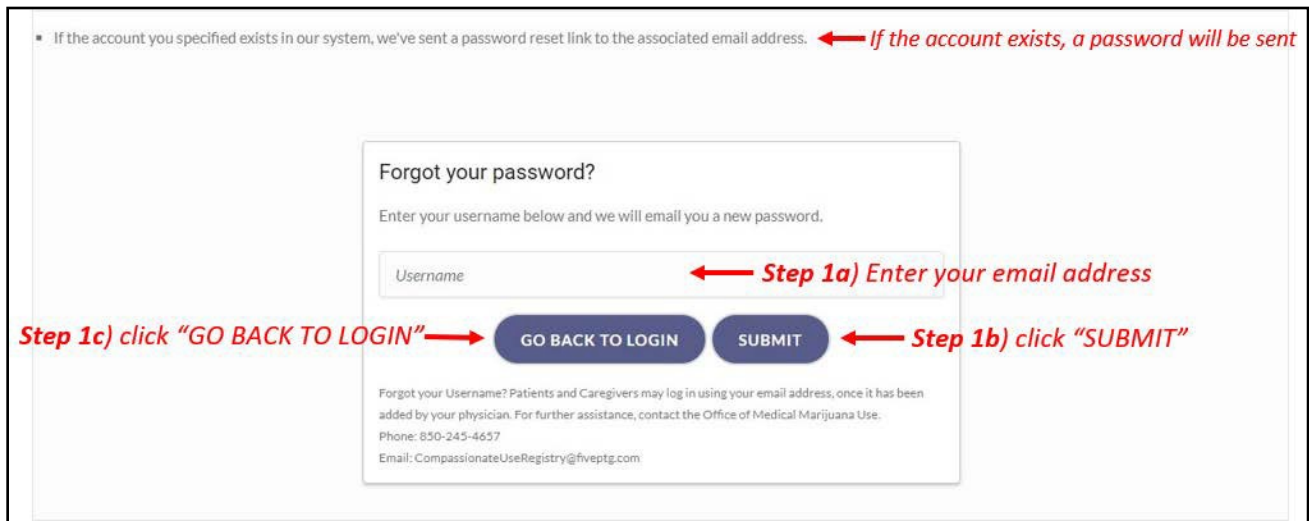
You will automatically be redirected to your Registry home page.

Understanding the Registry Patient and Caregiver Password Reset Login Instructions

Step 1: You can request to reset your password by going to the Registry at:

<https://mmuregistry.flhealth.gov/Public/ForgotPassword>.

- a) Enter your Username (Your username is your email address).
- b) Click "Submit." A message will state that, if the account exists, a link has been sent to the email address.
- c) Click "Go Back to Login."



• If the account you specified exists in our system, we've sent a password reset link to the associated email address. ← *If the account exists, a password will be sent*

Forgot your password?
Enter your username below and we will email you a new password.

Username ← *Step 1a) Enter your email address*

GO BACK TO LOGIN SUBMIT ← *Step 1b) click "SUBMIT"*

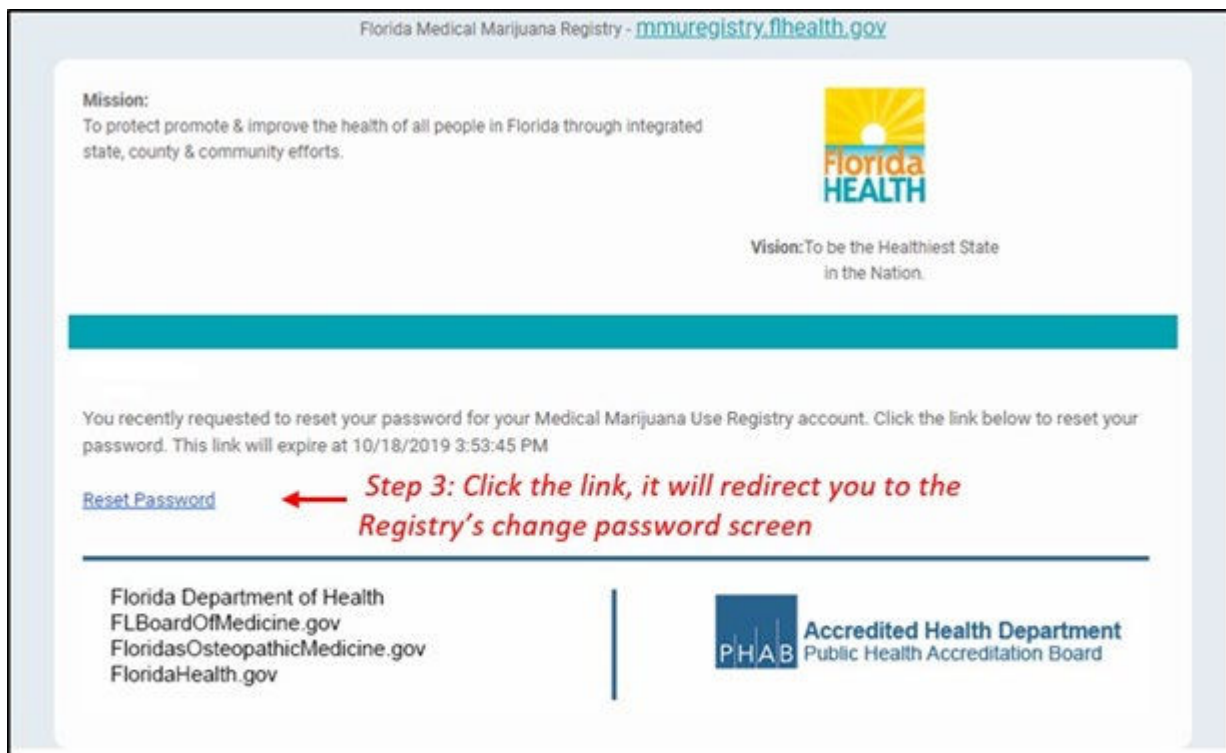
← *Step 1c) click "GO BACK TO LOGIN"*

Forgot your Username? Patients and Caregivers may log in using your email address, once it has been added by your physician. For further assistance, contact the Office of Medical Marijuana Use.
Phone: 850-245-4657
Email: CompassionateUseRegistry@fveptg.com

Step 2: Go to your email account and locate the email with "Password Reset" as the subject line. Utilize the most recent "Password Reset" email. The temporary link is only valid for one login attempt and must be used within 24 hours.


*If you do not find the "Password Reset" email, [click here](#) for additional information.

Step 3: Click on the "Reset Password" link in the email. This link will take you to the "Change Password" screen.



Florida Medical Marijuana Registry - mmuregistry.flhealth.gov

Mission:
To protect promote & improve the health of all people in Florida through integrated state, county & community efforts.




Vision: To be the Healthiest State in the Nation.

You recently requested to reset your password for your Medical Marijuana Use Registry account. Click the link below to reset your password. This link will expire at 10/18/2019 3:53:45 PM

[Reset Password](#) ← *Step 3: Click the link, it will redirect you to the Registry's change password screen*

Florida Department of Health
FLBoardOfMedicine.gov
FloridasOsteopathicMedicine.gov
FloridaHealth.gov



Accredited Health Department
Public Health Accreditation Board

Step 4: Create your new password. You need to add a password to your Registry account that is unique to you. It must be at least 10 characters long and include each of the following:

- Lowercase letters (a-z)
- Uppercase letters (A-Z)
- Numbers (0-9)
- Special characters (!"#\$%&'()*+,-./:;<=>?@[\\]^_`{|}~)

**You can click "Show Password" for help.*

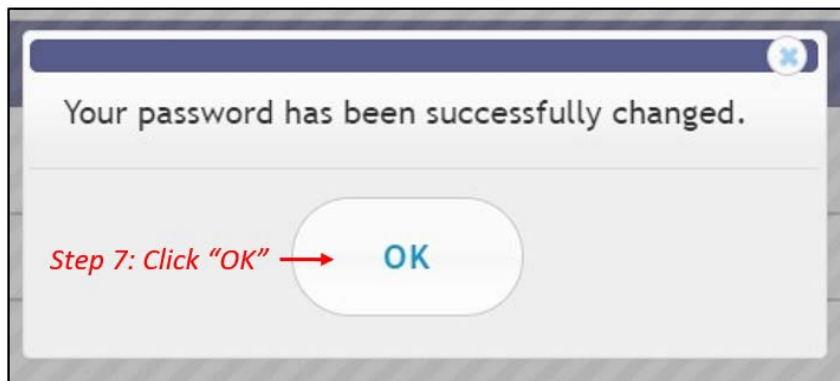
Step 5: Confirm your new password.

Step 6: Click "Submit."

The screenshot shows a 'Change Password' form with the following elements and annotations:

- New Password:** A text input field with a red arrow pointing to it and the text *Step 4: Type your new password*.
- SHOW PASSWORD:** A button with a blue arrow pointing to it and the text *Click to view hidden password*.
- Confirm New Password:** A text input field with a red arrow pointing to it and the text *Step 5: Confirm your new password*.
- SUBMIT:** A button with a red arrow pointing to it and the text *Step 6: Click submit*.
- Requirements:** A list of password requirements with a blue bracket on the left and the text *Will change to green as each criterion is met.* pointing to the list:
 - Contains a lowercase letter
 - Contains an uppercase letter
 - Contains a number
 - Contains a special character
 - Contains at least 10 characters
 - Contains no spaces

Step 7: A message box will pop up stating, "Your password has been successfully changed." Click "Ok."



Step 8: You will be taken back to the home page where you must log in using the new password you created in Step 4.

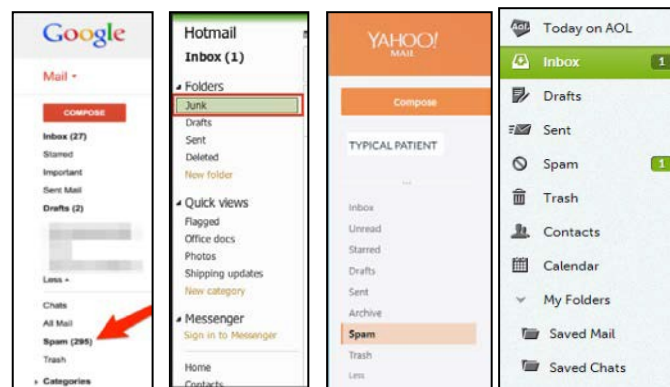
Understanding the Registry

Locating email in Junk/Spam – Adding a safe-sender

Many email services make their filters very strict and emails coming from the Medical Marijuana Use Registry can be marked as spam or junk mail. Most emails will arrive directly to the inbox. However, if they do not please check your junk/spam folder.

Step 1: Open your email.

Step 2: Locate the Junk/Spam folder. This folder usually appears on the left side of the screen of the email service you use. For example:



**If you are accessing your email from another device you may need to locate your folder list from a drop-down menu.*

Step 3: Click the folder titled Junk or Spam to view the emails that are sorted into it.

Step 4: Click the email from MedicalMarijuanaUse@flhealth.gov to open the email.

If the email was not in your spam/junk folder, you may need to add our email address to your Safe-Sender or White List.

The attached link will help you to add MedicalMarijuanaUse@flhealth.gov to your [safe-senders list](#).

For instructions on adding us to your Hotmail/Outlook safe-senders list, [click here](#).



Understanding the Registry Self-Deactivating from your Qualified Physician

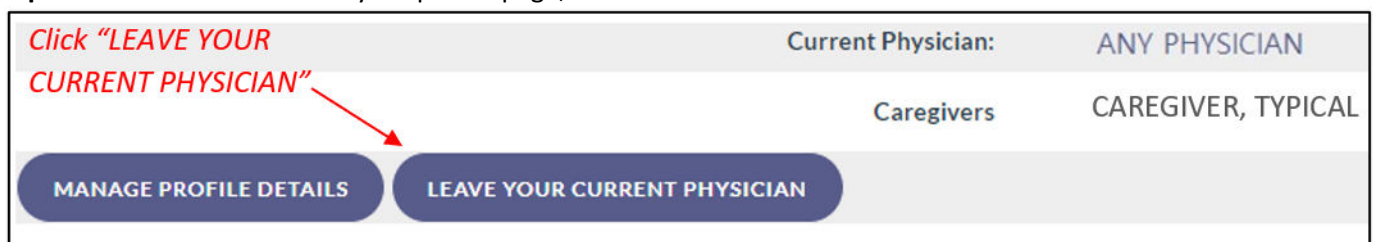
Step 1: Log into the Medical Marijuana Use Registry <https://mmuregistry.flhealth.gov/>.

*If you do not remember your password, learn how to reset it by [clicking here](#).

Step 2: Navigate to the “YOUR PROFILE” menu option at the top of the page to view your information.



Step 3: Scroll to the bottom of your profile page, then click “LEAVE YOUR CURRENT PHYSICIAN.”



**If the “Current Physician” states “No Current Physician,” or you do not have a button for “LEAVE YOUR CURRENT PHYSICIAN,” you are not currently active with a qualified physician. Please contact your new qualified physician and have them activate you under their care.*

Step 4: Click “Confirm” to save your changes.



Once you have completed these steps, please contact your new qualified physician and have them activate you under their care.

If you have not already chosen a new qualified physician, you can use the [Medical Marijuana Physicians Search Tool](#) to help you find a qualified physician by location or specialty.

If you wish to file a complaint against a physician, you may do so here: <https://www.flhealthcomplaint.gov/>

Understanding the Registry

Understanding Your Orders

Step 1: Log into the Medical Marijuana Use Registry <https://mmuregistry.flhealth.gov/>.

Note: If you do not remember your password, learn how to reset it by [clicking here](#).

Step 2: Navigate to the “Your Profile” menu option at the top of the page to view your information.



Step 3: Scroll to the bottom of your profile page to the section that lists your orders.

Each order shows you:

- Order status: Orders are listed as Open, Scheduled, Expired, Completed, or Cancelled.
 - Open: Orders from which you can currently purchase medical marijuana.
 - Scheduled: Orders that will become Open at a later date.
 - Expired: Orders that are past the end date but not all dispensations were made.
 - Completed: all dispensations have been made from that Order.
 - Cancelled: your physician has cancelled the Order.
- Order Type: Shows type of marijuana recommended by your physician.
- Start dates: The date the Order is open or scheduled to open.
- Placed by: The name of the physician who placed the Order. *Clicking the physician's name will take you to their physician profile page.*
- Purchase Device: Shows if you can purchase a delivery device or not. This is decided by your physician.
- Days: The number of days your Order is open.
- End Date: The date your Order will expire.

Step 4: Click “Expand” to see the details of your order.

Orders for: NEW, PATIENT

Show 10 entries *← To show more than 10 entries* Search: SEARCH

Expand	Order Status	Order Type	Start Date	Placed By	Purchase Device	Days	End Date	Edit
EXPAND	Open	Smoking Marijuana	11/14/2019	ANY DOCTOR	Yes	35	12/18/2019	
EXPAND	Open	Medical Marijuana	11/14/2019	ANY DOCTOR	Yes	70	1/22/2020	
EXPAND	Open	Low-THC Cannabis	11/14/2019	ANY DOCTOR	Yes	70	1/22/2020	
EXPAND	Scheduled	Smoking Marijuana	12/19/2019	ANY DOCTOR	Yes	35	1/22/2020	
EXPAND	Scheduled	Smoking Marijuana	1/23/2020	ANY DOCTOR	Yes	35	2/26/2020	
EXPAND	Scheduled	Medical Marijuana	1/23/2020	ANY DOCTOR	Yes	70	4/1/2020	
EXPAND	Scheduled	Low-THC Cannabis	1/23/2020	ANY DOCTOR	Yes	70	4/1/2020	
EXPAND	Scheduled	Smoking Marijuana	2/27/2020	ANY DOCTOR	Yes	35	4/1/2020	
EXPAND	Scheduled	Smoking Marijuana	4/2/2020	ANY DOCTOR	Yes	35	5/6/2020	
EXPAND	Scheduled	Medical Marijuana	4/2/2020	ANY DOCTOR	Yes	35	6/10/2020	

Showing 1 to 10 of 12 entries *← Displays total entries* *Displays page you are currently viewing* → Previous 1 2 Next

Once the order has been expanded you will find:

- The route your physician has recommended for you to use/take for that type.
- Total Amount Ordered: The total milligrams on the Order.
- Mg Per Day: The total number of milligrams per day your physician recommends.
- Note: Notes from the physician for you or the MMTC.
- Dispensable Amount: Amount remaining available for dispensations.
- Details on all items you have purchased from an MMTC.

Expand	Order Status	Order Type	Start Date	Placed By	Days	End Date	Edit
COLLAPSE	Open	Smoking Marijuana	10/26/2021		35	11/29/2021	

Smoking

Route: Smoking

Total Amount Ordered: 2.500 ounces

Purchase Device: Yes

Note: test

Dispensable Amount : 0.000 oz See Calculation

Displays route ordered, total amount ordered, authorized delivery devices, any notes, and the dispensable amount remaining

Dispensed On	At	Amount Dispensed	Status
10/26/2021 01:45 PM	Valid MMTC	2.5 Ounces	Given To Patient

Record of all actions taken within order →

Amount Remaining: 2.500 *← Amount remaining after dispensations*

For additional information, visit
KnowTheFactsMMJ.com

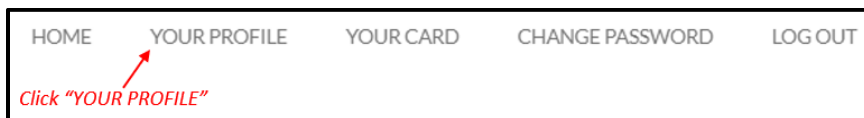
Understanding the Registry Amount Available Calculation Page

This guide will help patients and caregivers understand the Amount Available Calculation page on the patient's profile. The Amount Available Calculation page will provide information on how much product has been dispensed to a patient in the supply period, how much available product the patient can be dispensed, and their dispensation history.

AMOUNT AVAILABLE CALCULATION PAGE

Step 1: Navigate to the Medical Marijuana Use Registry (MMUR) <https://mmuregistry.flhealth.gov>

Step 2: Click "YOUR PROFILE."



Step 3: Once you are on your profile page, scroll down to the "Orders" section.

Orders for: PATIENT 02, TEST

Show 10 entries Search: SEARCH

Expand	Order Status	Order Type	Start Date	Placed By	Days	End Date	Edit
EXPAND	Open	Low-THC Cannabis	11/15/2021	ANY DOCTOR	70	1/23/2022	
EXPAND	Open	Medical Marijuana	11/15/2021	ANY DOCTOR	70	1/23/2022	
EXPAND	Open	Smoking Marijuana	11/15/2021	ANY DOCTOR	35	12/19/2021	
EXPAND	Scheduled	Smoking Marijuana	5/9/2022	ANY DOCTOR	35	6/12/2022	
EXPAND	Scheduled	Smoking Marijuana	4/4/2022	ANY DOCTOR	35	5/8/2022	
EXPAND	Scheduled	Low-THC Cannabis	4/4/2022	ANY DOCTOR	70	6/12/2022	

Step 4: Click "EXPAND" next to an open "Smoking Marijuana" or an open "Medical Marijuana" order type.



Step 5: The “Dispensable Amount” is the amount currently eligible to be dispensed and is calculated as the difference between the amount permitted by your current order and your total dispensation history over the past 35 days for “Smoking Marijuana” and the past 70 days for the “Medical Marijuana” order types.

Route: Smoking			
Total Amount Ordered: 2.500 ounces			
Purchase Device: No			
Note:			
<i>Current amount available for dispensation</i> → Dispensable Amount: 2.000 oz See Calculation			
Dispensed On	At	Amount Dispensed	Status
02/21/2022 11:10 AM	04 Chs Dispensary	0.15 Ounces	Given To Patient
Amount Remaining: 2.350			
02/21/2022 11:10 AM	04 Chs Dispensary	0.1 Ounces	Given To Patient
Amount Remaining: 2.250			
02/21/2022 11:10 AM	04 Chs Dispensary	0.25 Ounces	Given To Patient
Amount Remaining: 2.000			

Step 5a: The “Amount Remaining” displays the amount remaining permitted by your current open order.

Route: Smoking			
Total Amount Ordered: 2.500 ounces			
Purchase Device: No			
Note:			
Dispensable Amount: 2.000 oz See Calculation			
Dispensed On	At	Amount Dispensed	Status
02/21/2022 11:10 AM	04 Chs Dispensary	0.15 Ounces	Given To Patient
Amount Remaining: 2.350			
02/21/2022 11:10 AM	04 Chs Dispensary	0.1 Ounces	Given To Patient
Amount Remaining: 2.250			
02/21/2022 11:10 AM	04 Chs Dispensary	0.25 Ounces	Given To Patient
<i>Amount remaining for this open order</i> → Amount Remaining: 2.000			

Step 5b: Click “See Calculation” next to “Dispensable Amount” to see details of this calculation.

Route: Smoking

Total Amount Ordered: 2.500 ounces

Purchase Device: No

Note:

Dispensable Amount: 2.000 oz [See Calculation](#) ← Click “See Calculation”

Dispensed On	At	Amount Dispensed	Status
02/21/2022 11:10 AM	04 Chs Dispensary	0.15 Ounces	Given To Patient
Amount Remaining: 2.350			
02/21/2022 11:10 AM	04 Chs Dispensary	0.1 Ounces	Given To Patient
Amount Remaining: 2.250			
02/21/2022 11:10 AM	04 Chs Dispensary	0.25 Ounces	Given To Patient
Amount Remaining: 2.000			

Step 6: The Calculations page will open in a new internet browser tab showing information for all routes within a patient’s certification.

Aggregate
Oral
Edibles
Topical
Sublingual
Inhalation
Suppository

P6FM9165's real-time dispensable amounts per section 381.986, Florida Statutes.

The information contained in the table below is being provided for informational purposes only. This table consists of real-time data generated directly from the Medical Marijuana Use Registry. All data used to calculate the amounts therein are based on your current order as entered by your qualified physician and the dispensations made by the MMTC when you purchase medical marijuana or marijuana in a form for smoking.

70-Day Marijuana Dispensation History: This amount is calculated as the sum of your total dispensation history over the past 70 days for this specific route and is based on the dispensations made by the MMTC when you purchase marijuana.

Marijuana Amount Eligible to be Dispensed: This number is the amount of marijuana currently eligible to be dispensed for this route and is calculated as the difference between the amount permitted by your current order and your total dispensation history over the past 70 days. The data used in this calculation is based on your current order as entered by your qualified physician and the dispensations made by the MMTC when you purchase marijuana.

Medical Marijuana - Aggregate	
70-Day Medical Marijuana Dispensation History	14950 mg
Medical Marijuana Amount Eligible to be Dispensed	9550 mg

Dispensation History:

Route	Amount	Date Dispensed	Date Expires
Oral	325 mg	1/18/2022	3/28/2022
Edible	325 mg	1/18/2022	3/28/2022
Topical	325 mg	1/18/2022	3/28/2022

P6FM9165's real-time dispensable amounts per section 381.986, Florida Statutes.

The information contained in the table below is being provided for informational purposes only. This table consists of real-time data generated directly from the Medical Marijuana Use Registry. All data used to calculate the amounts therein are based on your current order as entered by your qualified physician and the dispensations made by the MMTC when you purchase medical marijuana or marijuana in a form for smoking.

35-Day Smoking Dispensation History: This amount is calculated as the sum of your total dispensation history over the past 35 days and is based on the dispensations made by the MMTC when you purchase marijuana in a form for smoking.

Smoking Amount Eligible to be Dispensed: This number is the amount of marijuana in a form for smoking currently eligible to be dispensed and is calculated as the difference between the amount permitted by your current order and your total dispensation history over the past 35 days. The data used in this calculation is based on your current order as entered by your qualified physician and the dispensations made by the MMTC when you purchase marijuana in a form for smoking.

Smoking - Aggregate	
35-Day Smoking Dispensation History	0.500 oz
Smoking Amount Eligible to be Dispensed	2.000 oz

Dispensation History:

Route	Amount	Date Dispensed	Date Expires
Smoking	0.150 oz	2/21/2022	3/27/2022
Smoking	0.100 oz	2/21/2022	3/27/2022
Smoking	0.250 oz	2/21/2022	3/27/2022

8/26/22

3

Step 6a: Information regarding marijuana in the form of smoking will display on the right side of the “Aggregate” tab on the calculations page. “35-Day Smoking Dispensation History” is calculated as the sum of the patient’s total dispensation history over the past 35 days and is based on the dispensations made by MMTCs when the patient purchases marijuana in a form for smoking.

Aggregate | Oral | Edibles | Topical | Sublingual | Inhalation | Suppository

P6FM9165's real-time dispensable amounts per section 381.986, Florida Statutes.

Aggregate tab

The information contained in the table below is being provided for informational purposes only. This table consists of real-time data generated directly from the Medical Marijuana Use Registry. All data used to calculate the amounts therein are based on your current order as entered by your qualified physician and the dispensations made by the MMTC when you purchase medical marijuana or marijuana in a form for smoking.

70-Day Marijuana Dispensation History: This amount is calculated as the sum of your total dispensation history over the past 70 days for this specific route and is based on the dispensations made by the MMTC when you purchase marijuana.

Marijuana Amount Eligible to be Dispensed: This number is the amount of marijuana currently eligible to be dispensed for this route and is calculated as the difference between the amount permitted by your current order and your total dispensation history over the past 70 days. The data used in this calculation is based on your current order as entered by your qualified physician and the dispensations made by the MMTC when you purchase marijuana.

P6FM9165's real-time dispensable amounts per section 381.986, Florida Statutes.

The information contained in the table below is being provided for informational purposes only. This table consists of real-time data generated directly from the Medical Marijuana Use Registry. All data used to calculate the amounts therein are based on your current order as entered by your qualified physician and the dispensations made by the MMTC when you purchase medical marijuana or marijuana in a form for smoking.

35-Day Smoking Dispensation History: This amount is calculated as the sum of your total dispensation history over the past 35 days and is based on the dispensations made by the MMTC when you purchase marijuana in a form for smoking.

Smoking Amount Eligible to be Dispensed: This number is the amount of marijuana in a form for smoking currently eligible to be dispensed and is calculated as the difference between the amount permitted by your current order and your total dispensation history over the past 35 days. The data used in this calculation is based on your current order as entered by your qualified physician and the dispensations made by the MMTC when you purchase marijuana in a form for smoking.

Medical Marijuana - Aggregate		Smoking - Aggregate	
70-Day Medical Marijuana Dispensation History	14950 mg	35-Day Smoking Dispensation History	0.500 oz
Medical Marijuana Amount Eligible to be Dispensed	9550 mg	Smoking Amount Eligible to be Dispensed	2.000 oz

Dispensation History:

Route	Amount	Date Dispensed	Date Expires
Oral	325 mg	1/18/2022	3/28/2022
Edible	325 mg	1/18/2022	3/28/2022
Topical	325 mg	1/18/2022	3/28/2022

Dispensation History:

Route	Amount	Date Dispensed	Date Expires
Smoking	0.150 oz	2/21/2022	3/27/2022
Smoking	0.100 oz	2/21/2022	3/27/2022
Smoking	0.250 oz	2/21/2022	3/27/2022

Marijuana in the form of smoking information

P6FM9165's real-time dispensable amounts per section 381.986, Florida Statutes.

The information contained in the table below is being provided for informational purposes only. This table consists of real-time data generated directly from the Medical Marijuana Use Registry. All data used to calculate the amounts therein are based on your current order as entered by your qualified physician and the dispensations made by the MMTC when you purchase medical marijuana or marijuana in a form for smoking.

35-Day Smoking Dispensation History: This amount is calculated as the sum of your total dispensation history over the past 35 days and is based on the dispensations made by the MMTC when you purchase marijuana in a form for smoking.

Smoking Amount Eligible to be Dispensed: This number is the amount of marijuana in a form for smoking currently eligible to be dispensed and is calculated as the difference between the amount permitted by your current order and your total dispensation history over the past 35 days. The data used in this calculation is based on your current order as entered by your qualified physician and the dispensations made by the MMTC when you purchase marijuana in a form for smoking.

Smoking - Aggregate

35-Day Smoking Dispensation History	0.500 oz
Smoking Amount Eligible to be Dispensed	2.000 oz

Dispensation History:

Route	Amount	Date Dispensed	Date Expires
Smoking	0.150 oz	2/21/2022	3/27/2022
Smoking	0.100 oz	2/21/2022	3/27/2022
Smoking	0.250 oz	2/21/2022	3/27/2022

Total amount dispensed in the last 35 days

Step 6b: “Smoking Amount Eligible to be Dispensed” displays the current amount of Marijuana in a form for Smoking available to be dispensed. Per section [381.986\(8\)\(e\)16.b., Florida Statutes](#), patients may not receive product in excess of this amount, even if there is a higher total amount left on the order.

P6FM9165's real-time dispensable amounts per section 381.986, Florida Statutes.

The information contained in the table below is being provided for informational purposes only. This table consists of real-time data generated directly from the Medical Marijuana Use Registry. All data used to calculate the amounts therein are based on your current order as entered by your qualified physician and the dispensations made by the MMTC when you purchase medical marijuana or marijuana in a form for smoking.

35-Day Smoking Dispensation History: This amount is calculated as the sum of your total dispensation history over the past 35 days and is based on the dispensations made by the MMTC when you purchase marijuana in a form for smoking.

Smoking Amount Eligible to be Dispensed: This number is the amount of marijuana in a form for smoking currently eligible to be dispensed and is calculated as the difference between the amount permitted by your current order and your total dispensation history over the past 35 days. The data used in this calculation is based on your current order as entered by your qualified physician and the dispensations made by the MMTC when you purchase marijuana in a form for smoking.

Smoking - Aggregate	
35-Day Smoking Dispensation History	0.500 oz
Smoking Amount Eligible to be Dispensed	2.000 oz ← <i>Current amount available for dispensation</i>

Dispensation History:

Route	Amount	Date Dispensed	Date Expires
Smoking	0.150 oz	2/21/2022	3/27/2022
Smoking	0.100 oz	2/21/2022	3/27/2022
Smoking	0.250 oz	2/21/2022	3/27/2022

Step 6c: “Dispensation History” shows all dispensations counting towards the patients aggregate sum as referenced in section [381.986\(8\)\(e\)16.b., Florida Statutes](#). Once the “date expires” has passed, the amount(s) dispensed on that date will no longer count towards the **35-Day Smoking Dispensation History**.

P6FM9165's real-time dispensable amounts per section 381.986, Florida Statutes.

The information contained in the table below is being provided for informational purposes only. This table consists of real-time data generated directly from the Medical Marijuana Use Registry. All data used to calculate the amounts therein are based on your current order as entered by your qualified physician and the dispensations made by the MMTC when you purchase medical marijuana or marijuana in a form for smoking.

35-Day Smoking Dispensation History: This amount is calculated as the sum of your total dispensation history over the past 35 days and is based on the dispensations made by the MMTC when you purchase marijuana in a form for smoking.

Smoking Amount Eligible to be Dispensed: This number is the amount of marijuana in a form for smoking currently eligible to be dispensed and is calculated as the difference between the amount permitted by your current order and your total dispensation history over the past 35 days. The data used in this calculation is based on your current order as entered by your qualified physician and the dispensations made by the MMTC when you purchase marijuana in a form for smoking.

Smoking - Aggregate	
35-Day Smoking Dispensation History	0.500 oz
Smoking Amount Eligible to be Dispensed	2.000 oz

Dispensation History: ← *Dispensation History*

The “Date Expires” is 11:59:59 PM on the date that is displayed

Route	Amount	Date Dispensed	Date Expires
Smoking	0.150 oz	2/21/2022	3/27/2022
Smoking	0.100 oz	2/21/2022	3/27/2022
Smoking	0.250 oz	2/21/2022	3/27/2022

Step 7: “70-Day Medical Marijuana History” is calculated as the sum of the patient’s total dispensation history over the past 70 days and is based on the dispensations made by MMTCs when the patient purchases marijuana in the selected route type.

P6FM9165's real-time dispensable amounts per section 381.986, Florida Statutes. *Selected route type*

The information contained in the table below is being provided for informational purposes only. This table consists of real-time data generated directly from the Medical Marijuana Use Registry. All data used to calculate the amounts therein are based on your current order as entered by your qualified physician and the dispensations made by the MMTC when you purchase medical marijuana or marijuana in a form for smoking.

70-Day Marijuana Dispensation History: This amount is calculated as the sum of your total dispensation history over the past 70 days for this specific route and is based on the dispensations made by the MMTC when you purchase marijuana.

Marijuana Amount Eligible to be Dispensed: This number is the amount of marijuana currently eligible to be dispensed for this route and is calculated as the difference between the amount permitted by your current order and your total dispensation history over the past 70 days. The data used in this calculation is based on your current order as entered by your qualified physician and the dispensations made by the MMTC when you purchase marijuana.

Medical Marijuana - Inhalation	
70-Day Medical Marijuana Dispensation History	325 mg ← <i>Total amount dispensed in the last 70 days</i>
Medical Marijuana Amount Eligible to be Dispensed	24175 mg

Dispensation History:

Route	Amount	Date Dispensed	Date Expires
Inhalation	325 mg	1/18/2022	3/28/2022

Step 7a: “Medical Marijuana Amount Eligible to be Dispensed” displays the current amount of Marijuana in the selected route type available to be dispensed. Per section [381.986\(8\)\(e\)16.b., Florida Statutes](#), patients may not receive product in excess of this amount, even if there is a higher total amount left on the order.

P6FM9165's real-time dispensable amounts per section 381.986, Florida Statutes.

The information contained in the table below is being provided for informational purposes only. This table consists of real-time data generated directly from the Medical Marijuana Use Registry. All data used to calculate the amounts therein are based on your current order as entered by your qualified physician and the dispensations made by the MMTC when you purchase medical marijuana or marijuana in a form for smoking.

70-Day Marijuana Dispensation History: This amount is calculated as the sum of your total dispensation history over the past 70 days for this specific route and is based on the dispensations made by the MMTC when you purchase marijuana.

Marijuana Amount Eligible to be Dispensed: This number is the amount of marijuana currently eligible to be dispensed for this route and is calculated as the difference between the amount permitted by your current order and your total dispensation history over the past 70 days. The data used in this calculation is based on your current order as entered by your qualified physician and the dispensations made by the MMTC when you purchase marijuana.

Medical Marijuana - Inhalation	
70-Day Medical Marijuana Dispensation History	325 mg
Medical Marijuana Amount Eligible to be Dispensed	24175 mg ← <i>Current amount available for dispensation for the selected route type</i>

Dispensation History:

Route	Amount	Date Dispensed	Date Expires
Inhalation	325 mg	1/18/2022	3/28/2022

Step 7b: “Dispensation History” shows dispensations for the selected route type counting towards the patient’s aggregate sum as referenced in section [381.986\(8\)\(e\)16.b., Florida Statutes](#). Once the “date expires” has passed, the amount(s) dispensed on that date will no longer count towards the **70-Day Medical Marijuana Dispensation History**.

Aggregate | Oral | Edibles | Topical | Sublingual | **Inhalation** | Suppository

P6FM9165's real-time dispensable amounts per section 381.986, Florida Statutes.

The information contained in the table below is being provided for informational purposes only. This table consists of real-time data generated directly from the Medical Marijuana Use Registry. All data used to calculate the amounts therein are based on your current order as entered by your qualified physician and the dispensations made by the MMTC when you purchase medical marijuana or marijuana in a form for smoking.

70-Day Marijuana Dispensation History: This amount is calculated as the sum of your total dispensation history over the past 70 days for this specific route and is based on the dispensations made by the MMTC when you purchase marijuana.

Marijuana Amount Eligible to be Dispensed: This number is the amount of marijuana currently eligible to be dispensed for this route and is calculated as the difference between the amount permitted by your current order and your total dispensation history over the past 70 days. The data used in this calculation is based on your current order as entered by your qualified physician and the dispensations made by the MMTC when you purchase marijuana.

Medical Marijuana - Inhalation

70-Day Medical Marijuana Dispensation History	325 mg
Medical Marijuana Amount Eligible to be Dispensed	24175 mg

Dispensation History: ← **Dispensation History**

The “Date Expires” is 11:59:59 PM on the date that is displayed

Route	Amount	Date Dispensed	Date Expires
Inhalation	325 mg	1/18/2022	3/28/2022

Step 7c: The “Aggregate” tab shows *all* dispensations counting towards the patient’s aggregate sum as referenced in section [381.986\(8\)\(e\)16.b., Florida Statutes](#). Once the “date expires” has passed, the amount(s) dispensed on that date will no longer count towards the **70-Day Medical Marijuana Dispensation History**.

Aggregate

Oral

Edibles

Topical

Sublingual

Inhalation

Suppository

P6FM9165's real-time dispensable amounts per section 381.986, Florida Statutes.
Aggregate tab selected

The information contained in the table below is being provided for informational purposes only. This table consists of real-time data generated directly from the Medical Marijuana Use Registry. All data used to calculate the amounts therein are based on your current order as entered by your qualified physician and the dispensations made by the MMTC when you purchase medical marijuana or marijuana in a form for smoking.

70-Day Marijuana Dispensation History: This amount is calculated as the sum of your total dispensation history over the past 70 days for this specific route and is based on the dispensations made by the MMTC when you purchase marijuana.

Marijuana Amount Eligible to be Dispensed: This number is the amount of marijuana currently eligible to be dispensed for this route and is calculated as the difference between the amount permitted by your current order and your total dispensation history over the past 70 days. The data used in this calculation is based on your current order as entered by your qualified physician and the dispensations made by the MMTC when you purchase marijuana.

Medical Marijuana - Aggregate	
70-Day Medical Marijuana Dispensation History	14950 mg
Medical Marijuana Amount Eligible to be Dispensed	9550 mg

The “Date Expires” is 11:59:59 PM on the date that is displayed

Dispensation History:

Route	Amount	Date Dispensed	Date Expires
Oral	325 mg	1/18/2022	3/28/2022
Edible	325 mg	1/18/2022	3/28/2022
Topical	325 mg	1/18/2022	3/28/2022
Sublingual	325 mg	1/18/2022	3/28/2022
Inhalation	325 mg	1/18/2022	3/28/2022
Suppository	325 mg	1/18/2022	3/28/2022
Oral	13000 mg	1/27/2022	4/6/2022

*Note, each route may be different, click the appropriate tab.

For additional information, visit
KnowTheFactsMMJ.com